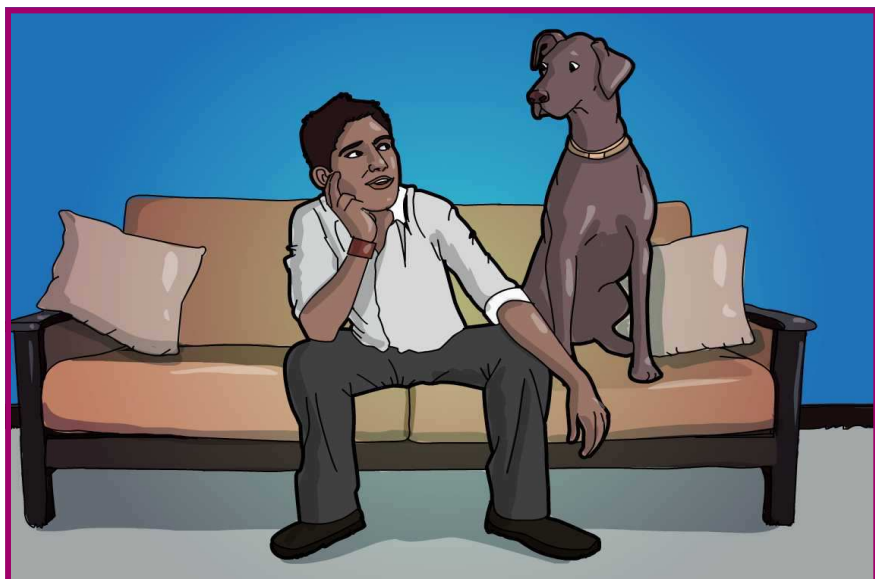


## Community Pharmacy - Emergency Supply



Ali is staying with his parents who have a dog; he has forgotten to bring his inhaler which he uses to manage his asthma that is often triggered by animal hair.



Ali visits the local pharmacy to request an emergency prescription but he only has an old repeat prescription with him. The pharmacist asks if he can view Ali's SCR



Ali agrees and the pharmacist views his SCR. He can see that Ali had received a repeat prescription for his inhaler from the GP the day before.



The pharmacist provides Ali with an emergency supply and advice on dose and frequency.

- Treatment provided to patients is more informed
- Reduction in patient treatment time
- Patients are treated sooner as pharmacists no longer have to contact the GP practice for information
- Patients are less likely to need to be referred to another NHS service